



# Slide Reference Guide

Specifications at a Glance Cross Section Guide

*Spring 2018*

**Accuride**<sup>®</sup>  
Always Moving Forward

## TO THE READER:

This catalog is designed to assist you in making the proper slide selection for your application. The information listed in this section explains the pertinent factors to consider when selecting a slide. Products are categorized as follows:

- **Light-Duty Slides** – Load ratings up to 75 pounds. These slides are suitable for small box drawers in residential and commercial cabinetry.
- **Medium-Duty Slides** – Load ratings range from 90–100 pounds. This group is appropriate for residential cabinetry, casework, and commercial desk and credenza drawers.
- **Heavy-Duty Slides** – Load ratings from 100–600 pounds. Suitable for a wide range of applications such as wide lateral files, large storage drawers, file cabinets, and pantry pull-outs.
- **Corrosion-Resistant Collection** – Load ratings from 100–1,323 pounds. These products are made with stainless steel and aluminum to provide solutions for applications subjected to moisture.
- **Flipper Door Slides®** – Load ratings from 25–75 pounds. These slides carry doors for entertainment centers, overhead storage units, and armoires.
- **Specialty Slides** – Load ratings from 14.5–265 pounds. This group includes media hardware, slides for kitchen cutting boards, pencil drawers, pull-out and pass-through shelves, and keyboard trays.

For additional information, technical sheets, and specific design information, visit our web site at [www.accuride.com](http://www.accuride.com)

## DESIGN FACTORS

As with the selection of any system component, when choosing a slide for a specific application, you should consider the full range of features by comparing the project requirements to the key performance elements of the slide.

**Length**—Slide length is measured as the longest dimension of a fully closed slide. As a rule, always use the maximum length allowable in the application.

**Extension**—Or travel refers to how far the drawer extends from the cabinet.

- 3/4 extension** Drawer opens partially, about 3/4 of the total slide length.
- Full extension** Drawer opens the same amount as the slide length.
- Over travel** Drawer opens more than the length of the slide.

**Drawer Width**—In general, wider drawers require a slide with a higher load rating and a cross section designed to withstand lateral stress. All slide products carry a maximum recommended drawer width.

**Types of Movement**—There are generally two types of slide movement:

- Telescoping** Slide movement occurs in stages. The drawer member extends fully and then picks up the intermediate member, pulling it to the end of the travel.
- Progressive** Movement is a result of all slide members moving simultaneously. This type of movement provides extremely smooth, quiet movement.

**Disconnects**—Slides with a disconnect method allow for the removal of the drawer or drawer member. Four types of disconnects are commonly found on slides for commercial and residential applications:

- Lever** Disconnect is achieved by releasing an internal lever and pulling the drawer straight outward, away from the cabinet.
- Rail** A rail latch allows you to raise the drawer off the slide and away from the cabinet. This type of disconnect facilitates smooth movement and easy drawer removal.
- Friction** No levers or latches are required to remove the drawer. Disconnect is achieved by pulling the drawer firmly through the resistance of the ball retainer.
- Push Latch** A latch is pressed to release the drawer. Disconnect is achieved by pulling the drawer firmly through the resistance of the ball retainer.

**NOTE:** Disconnect instructions are available online at <https://www.accuride.com/en-us/resources/videos/slide-terminology>

**Slide Profiles**—More than one slide profile (or height) may be appropriate for a given application. Accuride provides several low-profile design options for applications in which a smaller profile would enhance the appearance of the completed unit.

## LOAD FACTORS

**Load Rating**—Most Accuride slides are tested a minimum of 50,000 cycles in accordance with the guidelines of all applicable ANSI/BIFMA specifications, or as appropriate for some moderate use applications. See the product technical sheet for specific information regarding test criteria. Thorough testing means that you can count on Accuride slides to meet industry-accepted criteria.

Our slides are rated for the dynamic load that an 18" pair will carry without failure (load rating decreases proportionally beyond the 18" length). In all cases, the static (resting) load capacity of each model is at least twice the load rating, providing at minimum a 100% static safety factor, even when the slide is loaded to its maximum rating. Because slide performance may be affected by factors unique to a specific application, always test slides in the intended application.

**Flat Mounting**—For optimal slide performance, mount slides only as indicated in the catalog or on the technical sheet. Certain slides may be mounted flat under a drawer, but the resulting load rating will be at least 50% less than the load rating applicable to the same pair of slides mounted vertically on the side of the drawer. Please consult the product technical sheet for specific flat-mount load rating information.

**Shock/Vibration**—Subjecting slides to shock and vibration may adversely affect the performance. Applications that are subject to these conditions should be tested to evaluate the affect on slide performance. If conditions are severe, select a heavier-duty slide.

## APPLICATION FACTORS

**Unit Construction**—When installed in a drawer or cabinet that is lightweight and flexible, drawer slides can contribute to the structural rigidity of the unit. To ensure that the slide is able to provide this support, select a model with a slightly higher load rating and larger cross section than you would ordinarily need for the application.

**Installation**—Most slides are designed to be mounted in pairs on the sides of drawers or moving unit. When installing slides, exercise care to ensure that they are mounted parallel to each other, in vertical and horizontal axes.

Before mounting slides other than as designed, carefully consider any potential adverse effects on the slide and, if necessary, consult the factory.

For example, mounting slides flat under the drawer, rather than on the side, will lower the load rating by at least 50%, but mounting a slide high on one side and low on the other side will have little adverse effect on load rating.

Be sure to evaluate the mounting scheme thoroughly and test as needed. Not all slide models can be used in flat-mount applications.

## ENVIRONMENTAL FACTORS

Unless otherwise stated, Accuride slides are designed for indoor use and should be protected from excessive moisture, chemical fumes, dirt, and corrosion. The Accuride self-cleaning ball retainer protects slide raceways by removing foreign particles between ball bearings. The lubricant provided is sufficient for normal slide life.

Use care when applying finishing agents because overspray may negatively affect slide movement. Should you need to clean the slides, you can re-lubricate them with a quality grease rated "EP" for extreme pressure.

Extreme temperatures can also affect the lubricant and plastic or rubber components. Commercial drawer slides are designed to be used for extended periods in temperatures between 0 and 180 degrees Fahrenheit. For service outside normal temperature and humidity ranges, consult the factory.

## MATERIALS & FINISHES

**Steel Slides**—Slide members and ball retainers are made from cold-rolled steel, ball bearings are carburized steel.

**Standard Finish (C):** Clear zinc electroplate

*Optional Finishes:*

**CB** - Black Chromate over Zinc

**CH** - Clear Chromate over Zinc w/8x Corrosion Protection

**CE** - Clear Chromate over Zinc w/Corrosion Protection (over CH)

**CP** - Clear Chromate over Zinc w/Corrosion Protection (over CE)

**EW** - Electroplate White

**Stainless Steel**—Slide members, ball retainers, and ball bearings are stainless steel.

**Aluminum**—Slide members are aluminum, ball retainers and bearings are stainless steel.

## TECHNICAL SUPPORT

Please visit the *Technical Resources* section on our web site at [www.accuride.com](http://www.accuride.com) for the most current technical information.

For further assistance, use the online *Technical Support Request* or send an e-mail to [technical@accuride.com](mailto:technical@accuride.com)

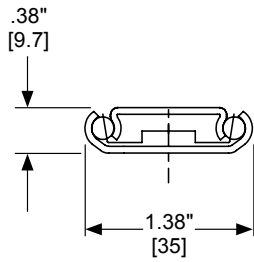
	MODEL	LOAD RATING	TRAVEL	DRAWER WIDTH	DETENT	DISCONNECT
<b>Light Duty</b>	1029	35 lbs. [16 kg]	3/4	16" [406 mm]	-	Friction
	2632	65 lbs. [30 kg]	Full	16" [406 mm]	Hold-in	Rail
	2132	75 lbs. [34 kg]	3/4	16" [406 mm]	Hold-in	Lever
<b>Medium-Duty Slides</b>	3732	100 lbs. [45 kg]	Full	16" [406 mm]	Hold-in	Push Latch
	3135EC	100 lbs. [45 kg]	Full	30" [762 mm]	Hold-in	Lever
	3160EC	100 lbs. [45 kg]	Full	60" [1524 mm]	Hold-in	Lever
	3832E	100 lbs. [45 kg]	Full	16" [406 mm] (varies by model)	Hold-in	Lever
	3834E	100 lbs. [45 kg]	1" Over [25.4 mm]	16" [406 mm]	Hold-in	Lever
	7432	100 lbs. [45 kg]	Full	24" [610 mm]	Hold-in	Rail
	7434	100 lbs. [45 kg]	1" Over [25.4 mm]	24" [610 mm]	Hold-in	Rail
	3017	100 lbs. [45 kg]	1" Over [25.4 mm]	24" [610 mm]	Hold-in	Rail
<b>Heavy-Duty Slides</b>	4032	150 lbs. [68 kg]	Full	27" [686 mm]	Hold-in	Rail
	4033	100 lbs. [45 kg]	Full	18" [457 mm]	Hold-in	Rail
	4034	150 lbs. [68 kg]	1.5" Over [38.1 mm]	24" [610 mm]	Hold-in	Rail
	4035	100 lbs. [45 kg]	1.5" Over [38.1 mm]	18" [457 mm]	Hold-in	Rail
	3634EC	150 lbs. [68 kg]	1" Over [25.4 mm]	42" [1067 mm]	Hold-in	Lever
	3634	200 lbs. [91 kg]	1" Over [25.4 mm]	42" [1067 mm]	Hold-in	Lever
	3641 Interlock	180 lbs. [82 kg]	1" Over [25.4 mm]	42" [1067 mm]	Hold-in	Rail
	3640A	200 lbs. [91kg] Side Mount 75 lbs. [34 kg] Flat Mount	1" Over [25.4 mm]	42" [1067 mm] 24" [610 mm]	Hold-in	Rail -
	3600	200 lbs. [91 kg]	Full	42" [1067 mm]	Hold-in	-
	3607 Lock-out	200 lbs. [91 kg]	Full	42" [1067 mm]	-	Lever
	3657	200 lbs. [91 kg]	Full	42" [1067 mm]	Hold-in	Lever
	7950	350 lbs. [159 kg]	Full	42" [1067 mm]	Hold-in	-
	7957	350 lbs. [159 kg]	Full	42" [1067 mm]	Hold-in	Lever
	9301E	180-600 lbs. [272 kg]	Full	Up to 42" [1067 mm]	-	-
	9307E Lock-out	180-600 lbs. [272 kg] Depending on application	Full	Up to 42" [1067 mm]	-	-
9308E lock-in/out	180-600 lbs. [272 kg] Depending on application	Full	Up to 42" [1067 mm]	-	-	

Note: Super Heavy-Duty Models AL4120 and AL4140 may be found in the Corrosion-Resistant Collection on page 28.

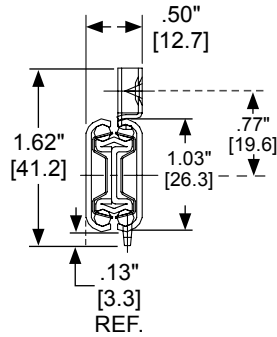
MODEL	LOAD RATING	TRAVEL	DRAWER WIDTH	DETENT	DISCONNECT	
SS2028 Stainless Steel	100 lbs. [45 kg]	3/4	18" [457 mm]	-	-	<b>Corrosion Resistant</b>
SS0330 Stainless Steel	143 lbs. [65 kg]	Full	18" [457 mm]	Hold-in	-	
SS5322 Stainless Steel	265 lbs. [120 kg]	Over	18" [457 mm]	Hold-in	Bracket	
SS5321 Stainless Steel	350 lbs. [159 kg]	Over	18" [457 mm]	Hold-in	-	
AL4120 Aluminium	1,212 lbs. [550 KG]	3/4	Load based on 24"	Hold-in	-	
AL4140 Aluminium	1,323 lbs. [600 kg]	Full	Load based on 24"	Hold-in	-	
MODEL	MAX. DOOR WEIGHT	MOUNTING		MAX. DOOR SIZE		<b>Flipper Door Slides®</b>
117	25 lbs. [11 kg]	Horizontal or Vertical		24" w x 36" h [610 mm x 914 mm]		
1145 Over-the-top	30 lbs. [14 kg]	Horizontal		Up to 36" [914 mm] wide		
1155 Easy-Down®	30 lbs. [14 kg]	Horizontal		Up to 48" [1219 mm] wide		
123/1234	30 lbs. [14 kg]	Horizontal or Vertical		24" w x 42" h [610 mm x 1067 mm]		
1321 Pro Pocket	30 lbs. [14 kg]	Vertical		24" w x 42" h [610 mm x 1067 mm]		
1332/1432 Anti-Rak cable	75 lbs. [34 kg]	Vertical		26" w x 78" h [660 mm x 1981 mm]		
MODEL	LOAD RATING	TRAVEL	DRAWER WIDTH	DETENT	DISCONNECT	
CB-LIFT-0019 Ascent	14.5 lbs. [6.6 kg]	22"	Push-to-operate mechanical lift for screens up to 17.5" tall and 22" diagonally.			
CB3620-258TV - TV Swivel	22.5 lbs. [102 kg]	-	Accuride's TV Swivel handles televisions up to 36" diagonally.			
2006 Pencil drawer slide	45 lb. [20 kg]	3/4	16" [406 mm]	-	Friction	<b>Specialty Slides</b>
2109 Suspended drawer slide	75 lbs. [34 kg]	3/4	16" [406 mm]	Hold-in & Out	-	
CBERGO-TRAY 200	-	3/4	16" [406 mm]	Hold-in & Out	-	
CBERGO-TRAY 300 - Deluxe	-	Full	29.6" [751 mm]	Hold-in, -out, & intermediate	-	
2019 Suspended shelf slide	75 lbs. [34 kg]	3/4	16" [406 mm]	Hold-in	Lever	
2002 Two-way travel slide	50 lbs. [23 kg]	3/4	12" [305 mm]	Center	-	
0363 Two-way travel slide	100 lbs. [45 kg]	Full	18" [457 mm]	Center	-	
322 - Pull-out shelf	100 lbs. [45 kg]	.88" over [22 mm]	16" [406 mm]	-	-	
340 - Butcher block slide	110 lbs. [50 kg]	Full	18" [457 mm]	-	Bracket	
301-2590 Pull-out storage slide	155 lbs. [70 kg]	.83" over [21 mm]	16" [406 mm]	Hold-in	-	
3600-200/3600-201 StowAway slides	175 lbs. [79 kg]	Full	20" [508 mm]	-	Lever	
115RC Linear Motion track system	265 lbs. [120 kg]	265 lbs. [120 kg]	-	-	-	
116RC Heavy-Duty Linear Motion track system	794 lbs. [360 kg]	265 lbs. [120 kg]	-	-	-	
CB-HAND Locking Handle Kit	Dependent on slide	-	Up to 60" [1.5 m]	-	-	
AL4190 Tilt-Track system	140 lbs. [65 kg]	Extends & tilts down	Up to 40" [1016 mm]	-	-	

LIGHT-DUTY

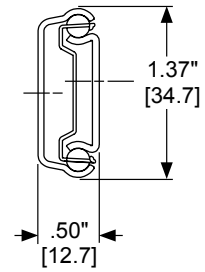
**1029**  
35 lbs.  
Max. drawer width 16"



**2632**  
65 lbs./pr.  
Max. dwr. width 16"

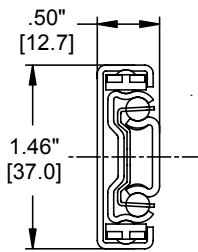


**2132** ♦♦  
75 lbs./pr.  
Max. dwr. width 16"

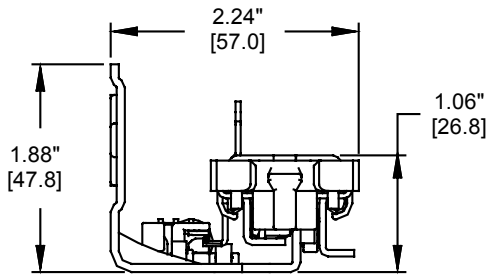


MEDIUM-DUTY

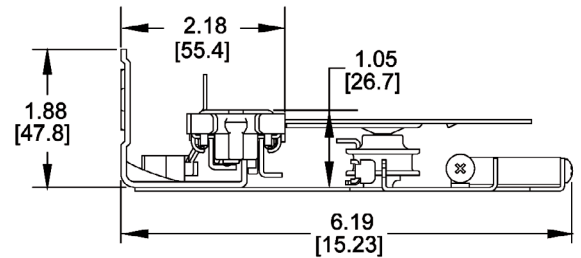
**3732**  
100 lbs./pr.  
Max. dwr. width 16"



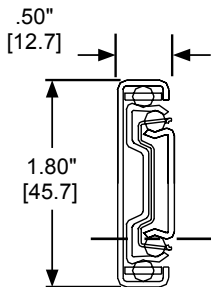
**ECLIPSE 3135EC** ♦♦  
100 lbs./pr.  
Max. dwr. width 30" wide



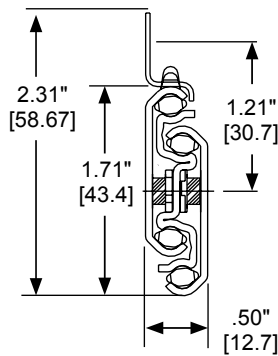
**ECLIPSE 3160EC** ♦♦  
100 lbs./pr.  
Max. dwr. width 30" wide



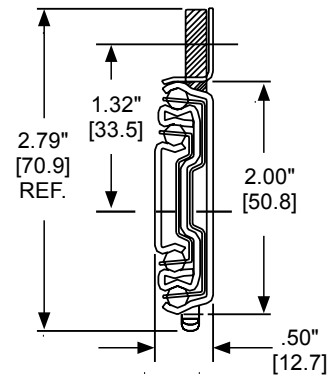
**3832E** ♦♦ / **3834E** \*  
90-100 lbs./pr.  
Max. dwr. width 16"



**7432/7434** ♦♦  
100 lbs./pr.  
Max. dwr. width 24"

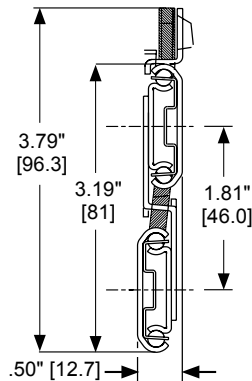


**3017**  
100 lbs./pr.  
Max. dwr. width 24"

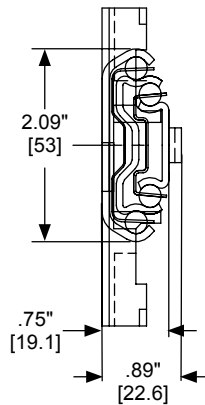


- ♦ - BHMA Certified
- ♦♦ - AWI Acknowledged
- \* - Varies by model

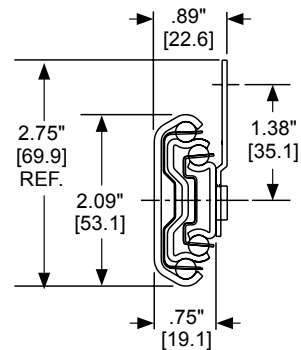
**4032/33/34/35**  
100-150 lbs./pr.  
Max. dwr. width: 18"-27"



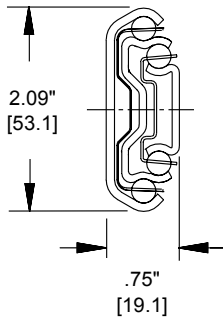
**3641** ♦  
180 lbs./pr.  
Max. dwr. width 42"



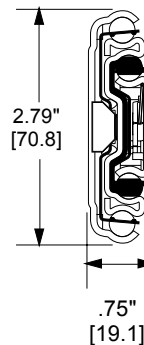
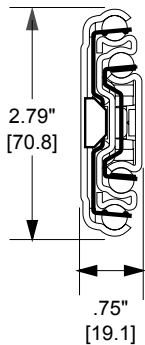
**3640A**  
200 lbs./pr. side mount  
Max. dwr. width 42"  
75 lbs./pr. flat mount  
Max. dwr. width 24"



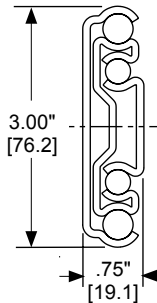
**3600/3607/3657**  
200 lbs./pr.  
Max. dwr. width 42"



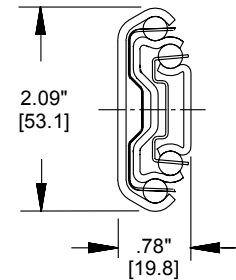
**7950/7957** ♦  
Side mount: 350 lbs./pr.  
Flat mount: 150 lbs./pr.  
Max. dwr. width 42"



**9301E/9307E/9308E** ♦  
150-500 lbs./pr.  
Dependent on usage

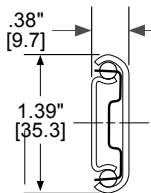


**3634/3634EC**  
150-200 lbs./pr.  
Up to 42" dwr. width

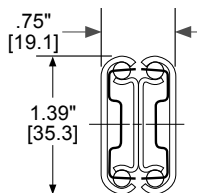


CORROSION RESISTANT

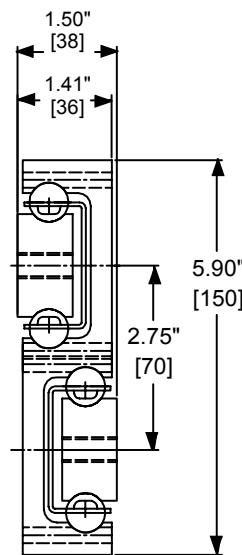
**SS2028**  
100 lbs./pr.  
Max. drawer width 18"



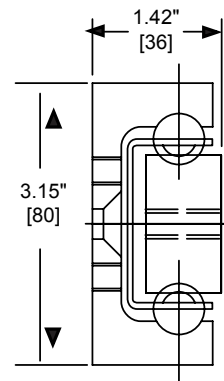
**SS0330**  
143 lbs./pr.  
Max. drawer width 18"



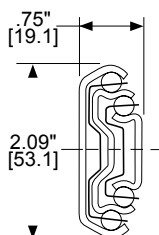
**AL4140**  
Up to 1,323 lbs./pr.



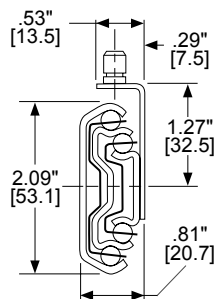
**AL4120**  
Up to 1,212 lbs./pr.



**SS5321**  
350 lbs./pr.  
Max. drawer width 18"



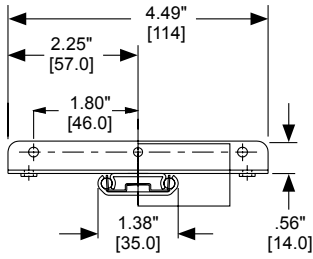
**SS5322**  
265 lbs./pr.  
Max. drawer width 18"



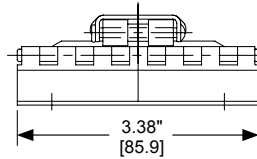
- ♦ - BHMA Certified
- ◆ - AWI Acknowledged

FLIPPER DOOR SLIDES®

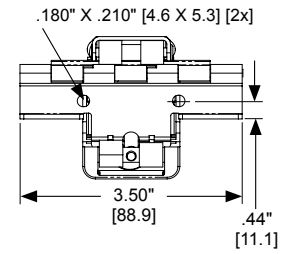
**117**  
25 lbs./pr.  
Doors up to 24" w x 36" h



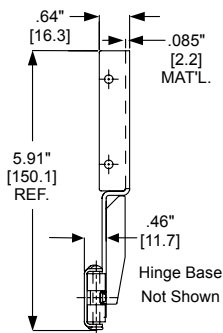
**1145**  
30 lbs./pr.  
Doors up to 36" wide



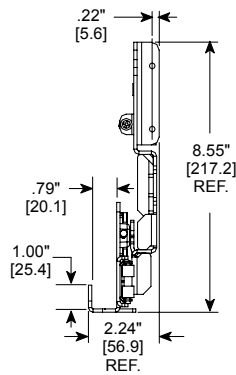
**1155**  
30 lbs./pr.  
Doors up to 48" wide



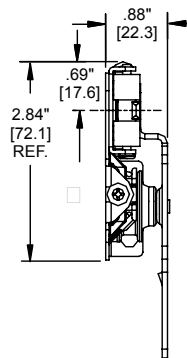
**123/1234**  
30 lbs./pr.  
Doors up to 24" w x 42" h



**1321**  
30 lbs./pr.  
Doors up to 24" w x 42" h

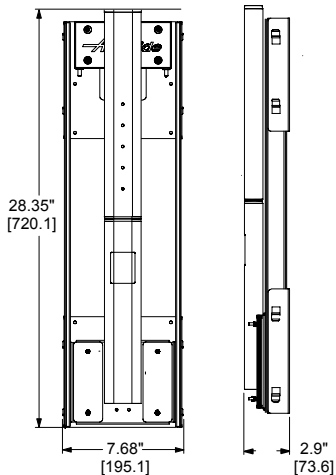


**1332/1432**  
75 lbs./pr.  
Doors up to 26" w x 78" h

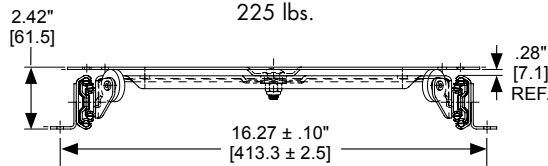


SPECIALITY SLIDE PRODUCTS

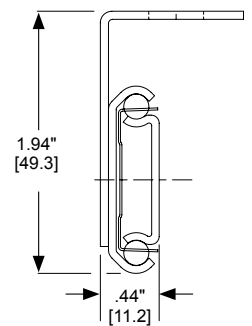
**ASCENT CBLIFT-0019**  
Up to 14.5 lbs.



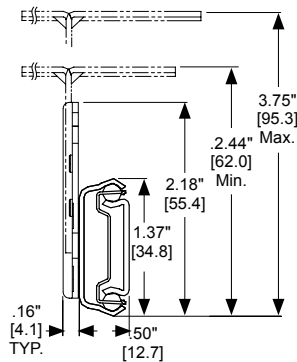
**CB3620-258TV**  
225 lbs.



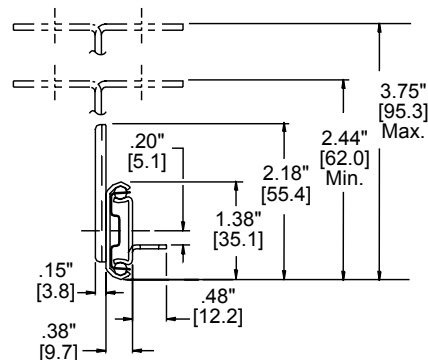
**2006**  
45 lbs./pr.  
Max. dwr. width 16"



**2109** ◆  
75 lbs./pr.  
Max. dwr. width 16"



**2019**  
75 lbs./pr.  
Max. dwr. width 16"

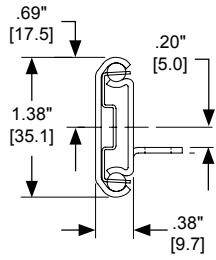


- ◆ - BHMA Certified
- ◆ - AWI Acknowledged



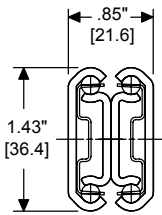
**2002**

50 lbs./pr.  
Max. dwr. width 12"



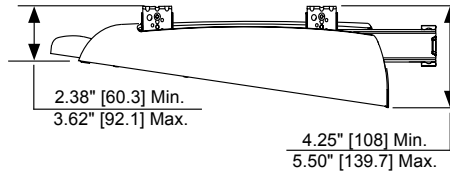
**0363**

100 lbs./pr.  
Max. dwr. width 18"



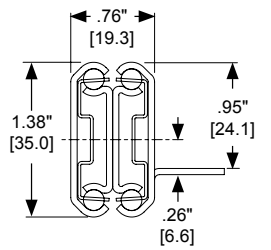
**CBERGO-TRAY200/300**

Profile width 29.6"



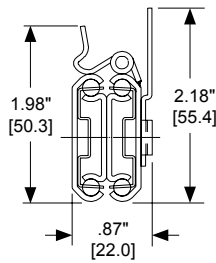
**322**

100 lbs./pr.  
Max. dwr. width 16"



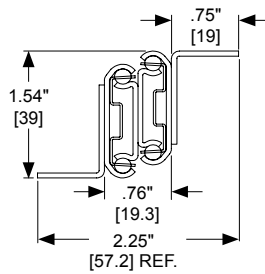
**340**

110 lbs./pr.  
Max. dwr. width 18"



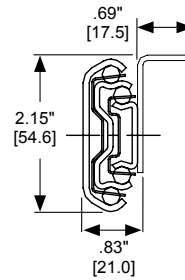
**301-2590**

155 lbs./pr.  
Max. dwr. width 16"



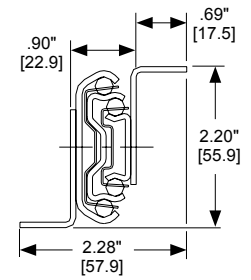
**3600-200**

175 lbs./pr.  
Max. dwr. width 20"



**3600-201**

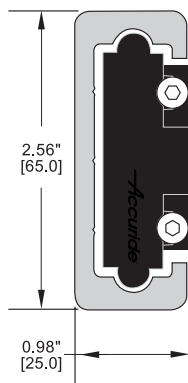
175 lbs./pr.  
Max. drawer width 20"



**116RC**

**HEAVY-DUTY LINEAR MOTION TRACK SYSTEM**

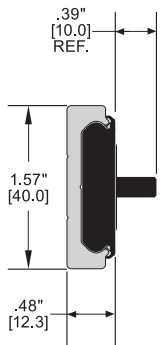
Up to 793 lbs. [360 kg]



**115RC**

**LINEAR MOTION TRACK SYSTEM**

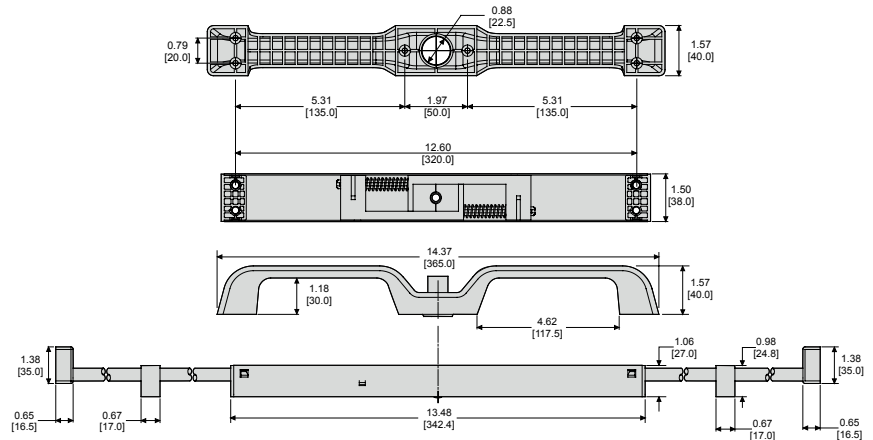
Up to 265 lbs. [120 kg]



**CB-HAND - LOCKING HANDLE KITS**

Max. dwr. width 60"

Adds lock-in and lock-out to heavy-duty slides.



**AL4190 - TILT TRACK SYSTEM**

140 lbs./pr.  
Max. dwr. width 40"

